

BALDOR® • RELIANCE 

Product Information Packet

VJPFPM2534T-2/4

30HP,3510RPM,3PH,60HZ,284JP,3936M,OPSB,F

Part Detail							
Revision:	M	Status:	PRD/A	Change #:		Proprietary:	No
Type:	AC	Elec. Spec:	39WGX943	CD Diagram:	CD0104	Mfg Plant:	
Mech. Spec:	39T043	Layout:	39LYT043	Poles:	02	Created Date:	01-11-2016
Base:	N	Eff. Date:	09-24-2018	Leads:	12#10		

Specs			
Catalog Number:	VJPFPM2534T-2/4	Insulation Class:	F
Enclosure:	OPSB	Inverter Code:	Not Inverter
Frame:	284JP	KVA Code:	G
Frame Material:	Steel	Lifting Lugs:	Vertical Lifting Lugs
Output @ Frequency:	30.000 HP @ 60 HZ	Locked Bearing Indicator:	Locked Bearing
Synchronous Speed @ Frequency:	3600 RPM @ 60 HZ	Motor Lead Quantity/Wire Size:	12 @ 10 AWG
Voltage @ Frequency:	200.0 V @ 60 HZ	Motor Lead Exit:	Ko Box
	400.0 V @ 60 HZ	Motor Lead Termination:	Flying Leads
XP Class and Group:	None	Motor Type:	3936M
XP Division:	Not Applicable	Mounting Arrangement:	F1
Agency Approvals:	UL	Power Factor:	89
	CSA EEV	Product Family:	Fire Pump Motor
Auxillary Box:	No Auxillary Box	Pulley End Bearing Type:	Ball
Auxillary Box Lead Termination:	None	Pulley Face Code:	C-Face
Base Indicator:	No Mounting	Pulley Shaft Indicator:	Tapped & Key
Bearing Grease Type:	Polyrex EM (-20F +300F)	Rodent Screen:	Included
Blower:	None	Shaft Extension Location:	Pulley End
Current @ Voltage:	40.000 A @ 400.0 V	Shaft Ground Indicator:	No Shaft Grounding

	80.000 A @ 200.0 V	Shaft Rotation:	Reversible
Design Code:	B	Shaft Slinger Indicator:	Shaft Slinger
Drip Cover:	Drip Cover	Speed Code:	Single Speed
Duty Rating:	CONT	Motor Standards:	NEMA
Electrically Isolated Bearing:	Not Electrically Isolated	Starting Method:	Wye Start - Delta Run
Feedback Device:	NO FEEDBACK	Thermal Device - Bearing:	None
Front Face Code:	Drip Cover Mounting	Thermal Device - Winding:	None
Front Shaft Indicator:	None	Vibration Sensor Indicator:	No Vibration Sensor
Heater Indicator:	No Heater	Winding Thermal 1:	None
		Winding Thermal 2:	None

Nameplate NP3454L											
CAT.NO.	VJPFPM2534T-2/4			CUST P/N				I.P.	23		
SPEC.	39T043X943H2			SER.NO.				FRAME	284JP		
HZ	60	HP	30	RPM	3510	HZ		HP		RPM	
VOLTS	200/400			CODE	G	VOLTS				CODE	
AMPS	80/40			DES	B	AMPS				DES	
EFF	91	SER.F.	1.15	PF	89	EFF				SER.F.	
RATING	40C AMB-CONT			DE BRG	6312	GREASE	POLYREX EM				
BLANK				ODE BRG	6208	MTR. WT.	379				
				CLASS	F	PH	3				
				ENCL	OPSB	CC	010A				
HTR-VOLTS		HTR-AMPS		HTR-WATTS							

Parts List		
Part Number	Description	Quantity
SA313334	SA 39T043X943H2	1.000 EA
RA300791	RA 39T043X943H2	1.000 EA
HW3201A01	1/2-13 EYEBOLT	1.000 EA
09CB2800A01	ADAPTER MACH FOR 09CB3000 AND 10CB3000	1.000 EA
19XW3118A08	.31-18 X .50 HEX WASHER HEAD TAPTITE II	2.000 EA
HW1001A31	LOCKWASHER 5/16, ZINC PLT.591 OD, .319 I	2.000 EA
WD1000B25	GND LUG, BURNDY L125HP OR T&B L125HP-BB	1.000 EA
19XW3118G08	.31-18X.50,HEX WSHR HD,TAPTITE 2,GREEN	1.000 EA
10CB3000SP	KOBX, CAST W/2.00 LEAD HOLE	1.000 EA
19XW3118A12	.31-18 X .75 HEX WASHER HEAD TAPTITE II	4.000 EA
39EP3200A02	FR E P, MACH - DR CVR MTG	1.000 EA
HW5100A08	W3118-035 WVY WSHR (WB)	1.000 EA
HA1101A01	RODENT SCREEN, 39 MTR	1.000 EA
51XW1032A06	10-32 X .38, TAPTITE II, HEX WSHR SLTD S	4.000 EA
39EP1404A09	PUEP MACH, 284-6JP OPEN, RODENT SCREEN	1.000 EA
HA1101A06	RODENT SCREEN FOR 39EP1404	1.000 EA
51XW1032A06	10-32 X .38, TAPTITE II, HEX WSHR SLTD S	6.000 EA
10XN3118K40	5/16-18 X 2.50" HEX HD, GRADE 5	4.000 EA
HW1001A31	LOCKWASHER 5/16, ZINC PLT.591 OD, .319 I	4.000 EA
HW1001A31	LOCKWASHER 5/16, ZINC PLT.591 OD, .319 I	4.000 EA
HA2009A03	SLINGER, ALUMINUM, (AUTO)ANODIZED ALUM	1.000 EA
80XN1032A06	10-32 X 3/8 SET SC HEX SOCK	1.000 EA
HW1001A38	LOCKWASHER 3/8, ZINC PLT .688 OD, .382 I	4.000 EA
HA7205	"L" SHAPE LIFTING LUG FOR 37,39 & 40 FRA	2.000 EA

Parts List (continued)		
Part Number	Description	Quantity
39FH4500A01	DRIP COVER, STAMPED	1.000 EA
10XN2520K16	1/4-20 X 1" HX HD SCRW GRADE 5, ZINC P	2.000 EA
HA2001B08	SPL SPACER FOR AIR DEFLECTOR .50 O.D. X	2.000 EA
10CB3500SP	CONDUIT BOX LID, CAST	1.000 EA
51XW2520A12	.25-20 X .75, TAPTITE II, HEX WSHR SLTD	4.000 EA
HW2501E18	KEY, 1/4 SQ X 2.000	1.000 EA
LB1115N	LABEL,LIFTING DEVICE (ON ROLLS)	1.000 EA
LB1182	WARNING LABEL FOR MOTORS WITH EYENUTS	2.000 EA
PK6016	BASELESS FOOT BRACKET FOR 39 & 40 FRAME	3.000 EA
10XN6311K20	5/8-11X 1 1/4 HEX HD, GRADE 5	2.000 EA
HW1000A63	5/8 SAE FLAT WASHER 1.31 DIA	2.000 EA
XY3816A12	3/8-16 FINISHED NUT	1.000 EA
HW1001A38	LOCKWASHER 3/8, ZINC PLT .688 OD, .382 I	1.000 EA
HW4500A03	GREASE FITTING, .125 NPT 1610(ALEMITE) 8	1.000 EA
HW4500A20	1/8NPT SL PIPE PLUG	1.000 EA
HA4051A00	PLASTIC CAP FOR GREASE FITTING	1.000 EA
HA3113A04	3/8-16 X 15.50 THRU BOLT	3.000 EA
HA31A1	.38-16 THRU BOLT 15.50 W/STUD .38-16 X.63	1.000 EA
MJ1000A02	GREASE, MOBIL POLYREX EM - 124047	0.030 LB
HW4500A03	GREASE FITTING, .125 NPT 1610(ALEMITE) 8	1.000 EA
HW4500A20	1/8NPT SL PIPE PLUG	1.000 EA
HA4051A00	PLASTIC CAP FOR GREASE FITTING	1.000 EA
MG1025R44	WILKOFAS, 784.109, CARMINE RED #3002	0.050 GA
85XU0407S04	4X1/4 U DRIVE PIN STAINLESS	2.000 EA

39AD2002B01	BAFFLE PLATE 39 OPEN, SLOTTED BAND MTRS	1.000 EA
39AD2002B01	BAFFLE PLATE 39 OPEN, SLOTTED BAND MTRS	1.000 EA
LB1119N	WARNING LABEL	1.000 EA
LC0104A01	CONNECTION DIAGRAM	1.000 EA
NP3454L	ALUM FIRE PUMP MOTOR(LEGACY/BALDOR ONLY)	1.000 EA
39PA1017	PACKAGING GP TALL CENTERED 09 CRATE	1.000 EA

AC Induction Motor Performance Data

Record # 54831 - Typical performance - not guaranteed values

Winding: 39WGX943-R001	Type: 3936M	Enclosure: OPSB
-------------------------------	--------------------	------------------------

Nameplate Data				400 V, 60 Hz: High Voltage Connection	
Rated Output (HP)	30			Full Load Torque	44.9 LB-FT
Volts	200/400			Start Configuration	direct on line
Full Load Amps	80/40			Breakdown Torque	157 LB-FT
R.P.M.	3510			Pull-up Torque	48 LB-FT
Hz	60	Phase	3	Locked-rotor Torque	67.8 LB-FT
NEMA Design Code	B	KVA Code	G	Starting Current	248 A
Service Factor (S.F.)	1.15			No-load Current	12 A
NEMA Nom. Eff.	91	Power Factor	89	Line-line Res. @ 25°C	0.287 Ω
Rating - Duty	40C AMB-CONT			Temp. Rise @ Rated Load	37°C
S.F. Amps				Temp. Rise @ S.F. Load	46°C
				Locked-rotor Power Factor	30.4
				Rotor inertia	0.92 LB-FT ²

Load Characteristics 400 V, 60 Hz, 30 HP

% of Rated Load	25	50	75	100	125	150	S.F.
Power Factor	61	81	87	89	89	88	89
Efficiency	89.3	92.1	92.4	91.5	90.2	88.5	90.7
Speed	3578	3556	3533	3509	3482	3451	3493
Line amperes	15.1	21.9	30.4	39.6	49.7	61.1	45.7

Performance Graph at 400V, 60Hz, 30.0HP Typical performance - Not guaranteed values

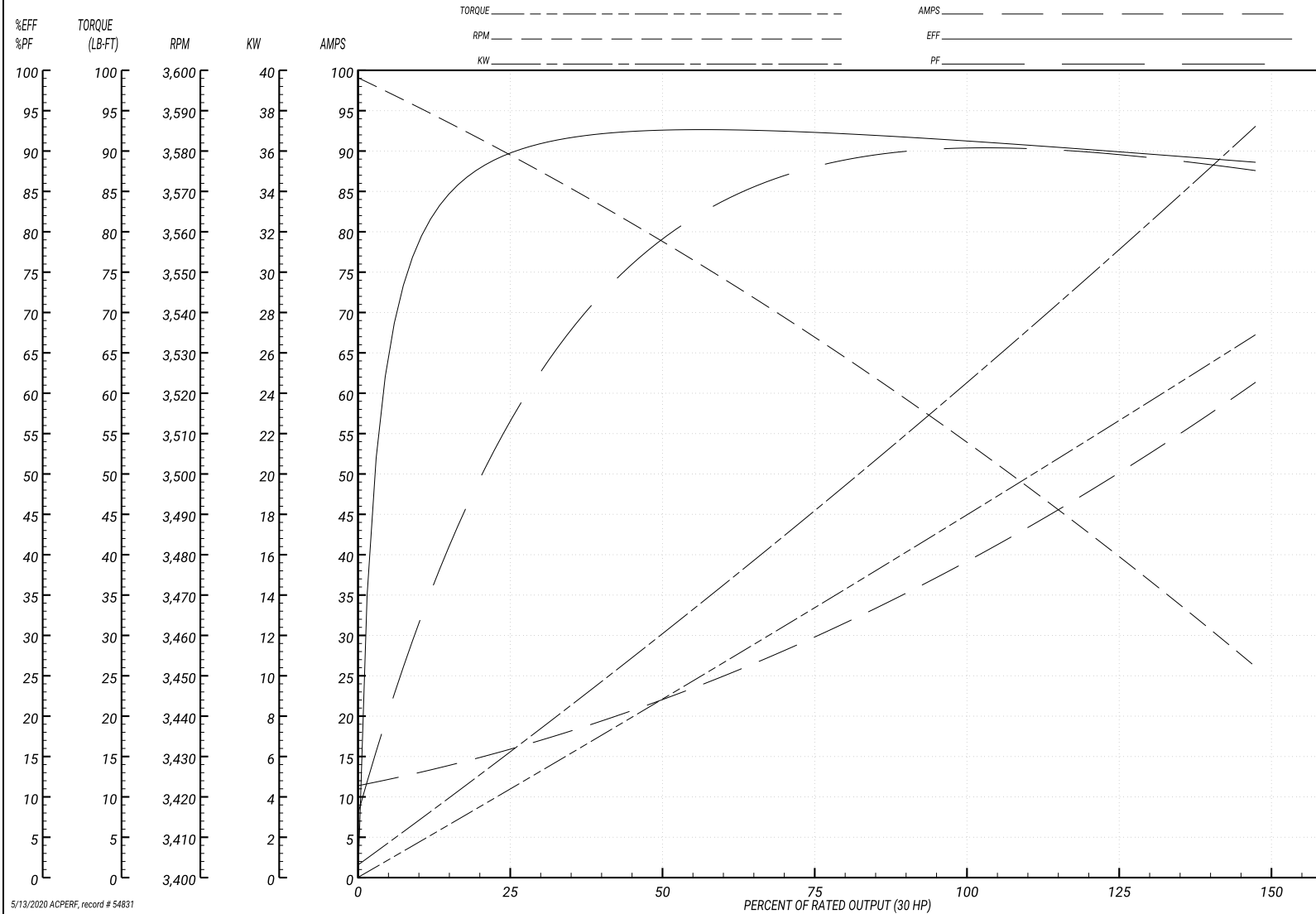
ABB Motors and Mechanical Inc.

WINDING # 39WG943

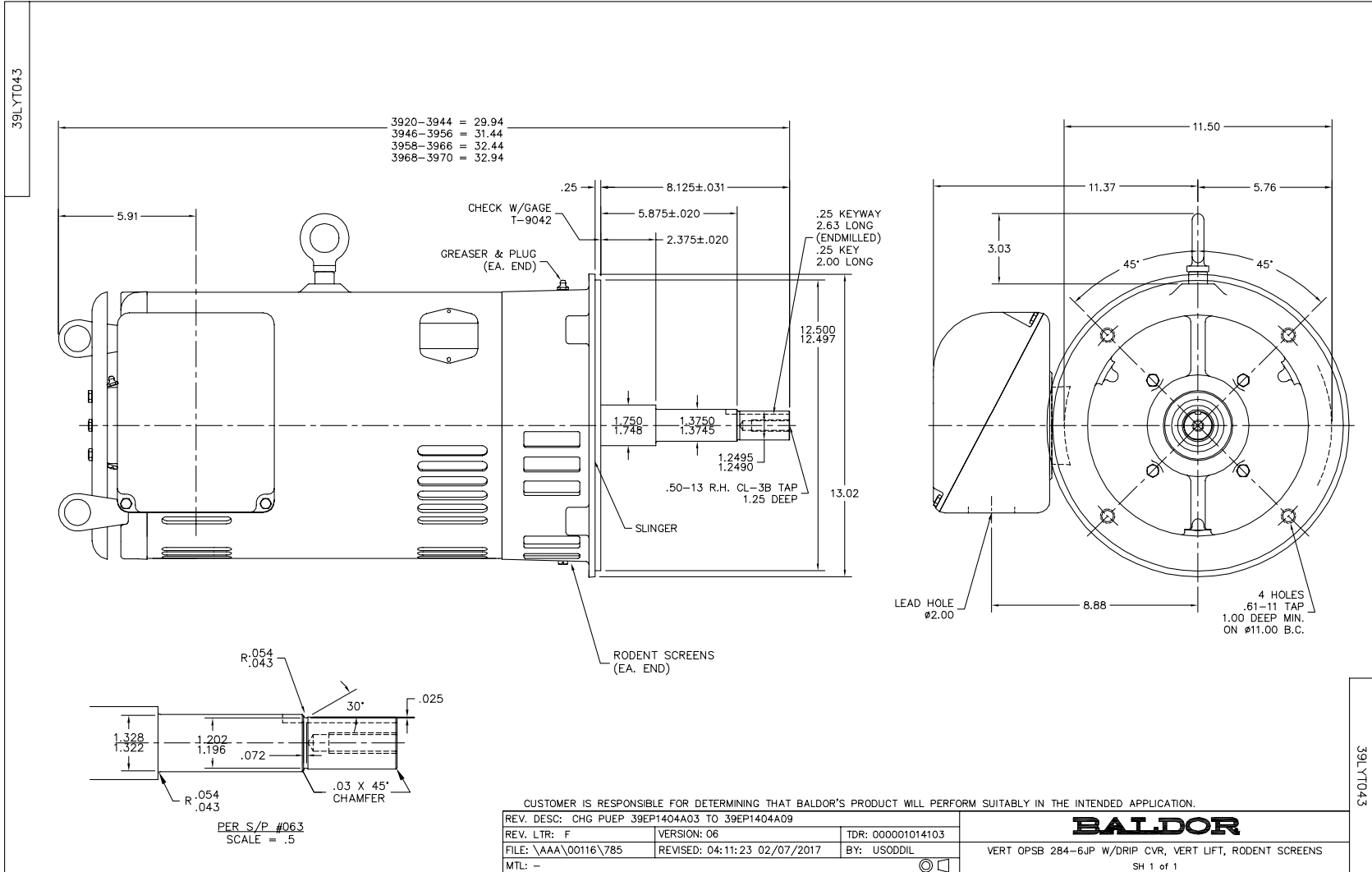
Typical performance - not guaranteed values.

30 HP 3 PH 60 HZ 3510 RPM 400 V 3936M

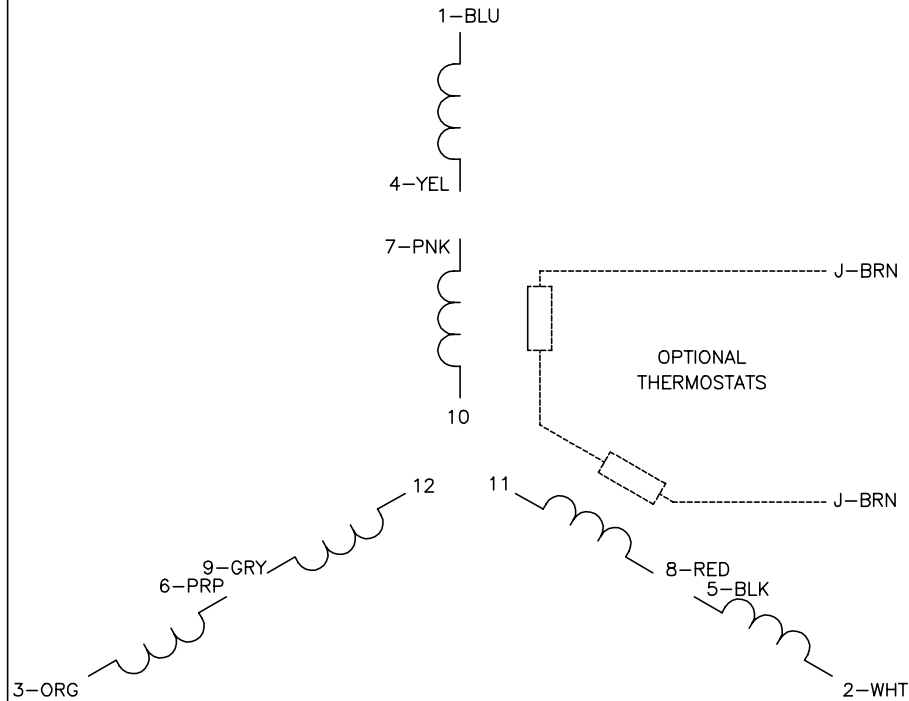
TORQUES(LB-FT): PO=157 PU=48 LR=67.8 LRA=248



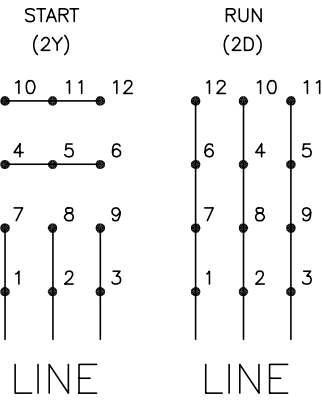
5/13/2020 ACPERF, record # 54831



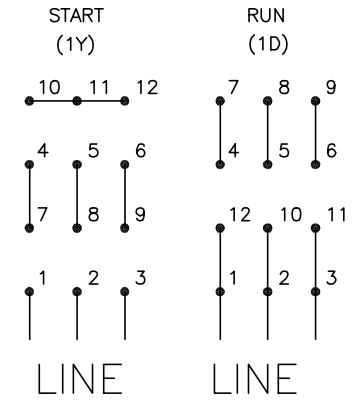
CD0104



LOW VOLTAGE



HIGH VOLTAGE



NOTES:

1. INTERCHANGE ANY TWO LINE LEADS TO REVERSE ROTATION.
2. OPTIONAL THERMOSTATS ARE PROVIDED WHEN SPECIFIED.
3. ACTUAL NUMBER OF INTERNAL PARALLEL CIRCUITS MAY BE A MULTIPLE OF THOSE SHOWN ABOVE.
4. LEAD COLORS ARE OPTIONAL. LEADS MUST ALWAYS BE NUMBERED AS SHOWN.

CD0104

REV. DESC: ADD CLASS CONN00000007		
REV. LTR: D	VERSION: 01	TDR: 000001099922
FILE: \AAA\00008\377	REVISED: 09:02:55 02/19/2019	BY: ENBRIRO
MTL: -	© □	

BALDOR - RELIANCE®

3PH, DV, 12 LEADS, Y START/D RUN

SH 1 of 1

Marketing maintained PDF of MN416:

<http://www.baldor.com/support/Literature/Load.ashx/MN416?ManNumber=MN416>